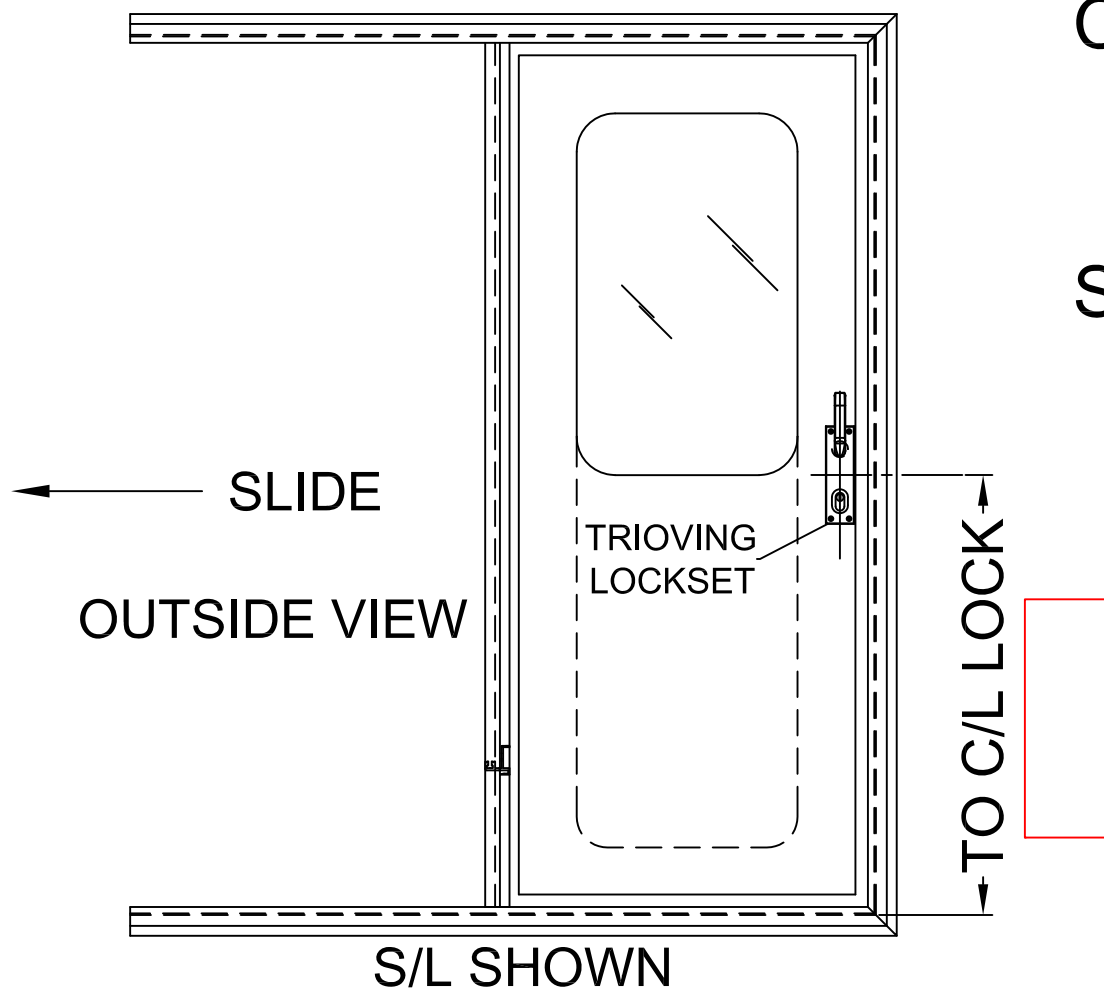


DATE: _____



CUT-OUT SIZE: W _____ " H _____ "
(FRAME WILL BE DOWN-SIZE TO FIT OPENING)

SLIDE DIRECTION FROM OUTSIDE: S/L _____ S/R _____

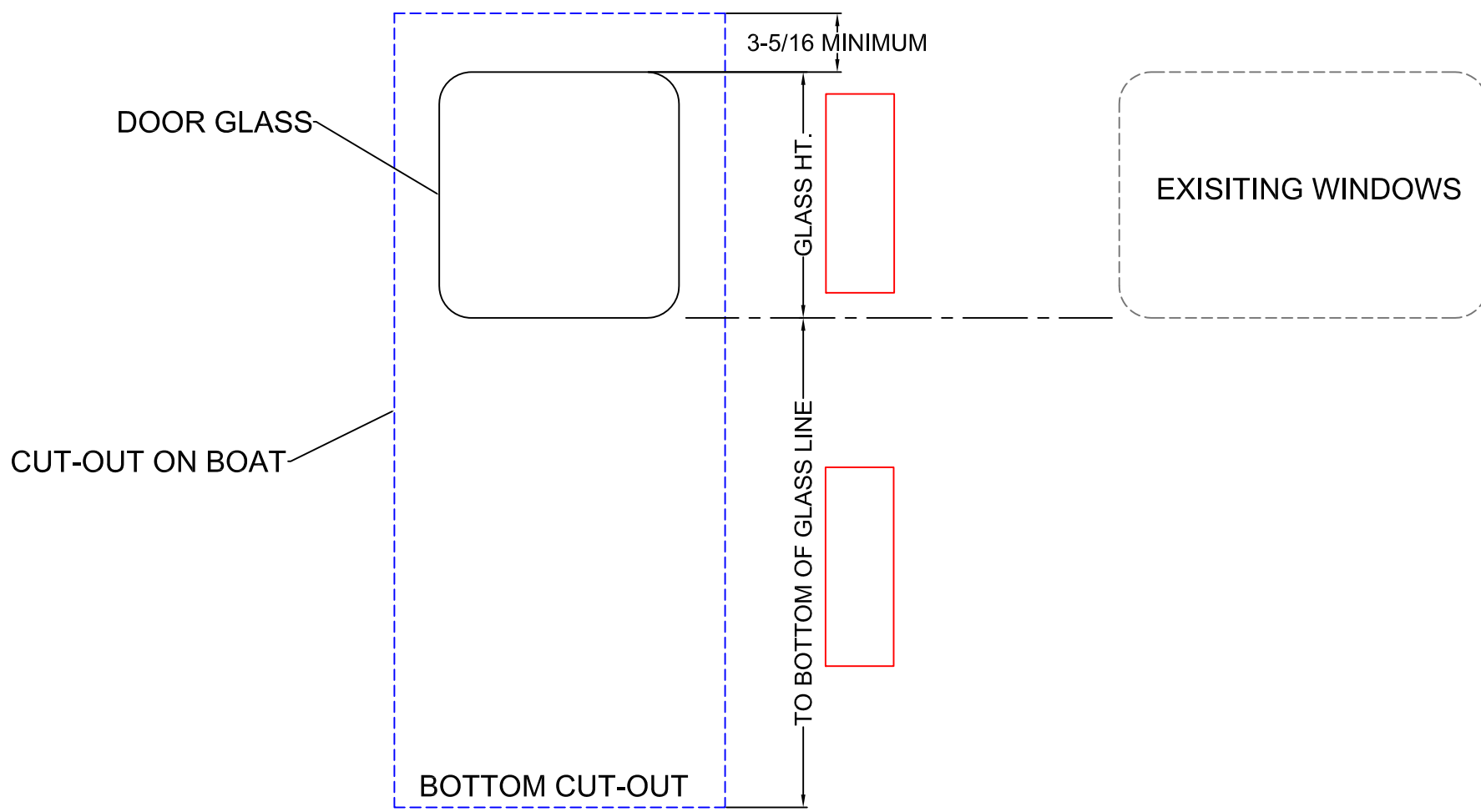
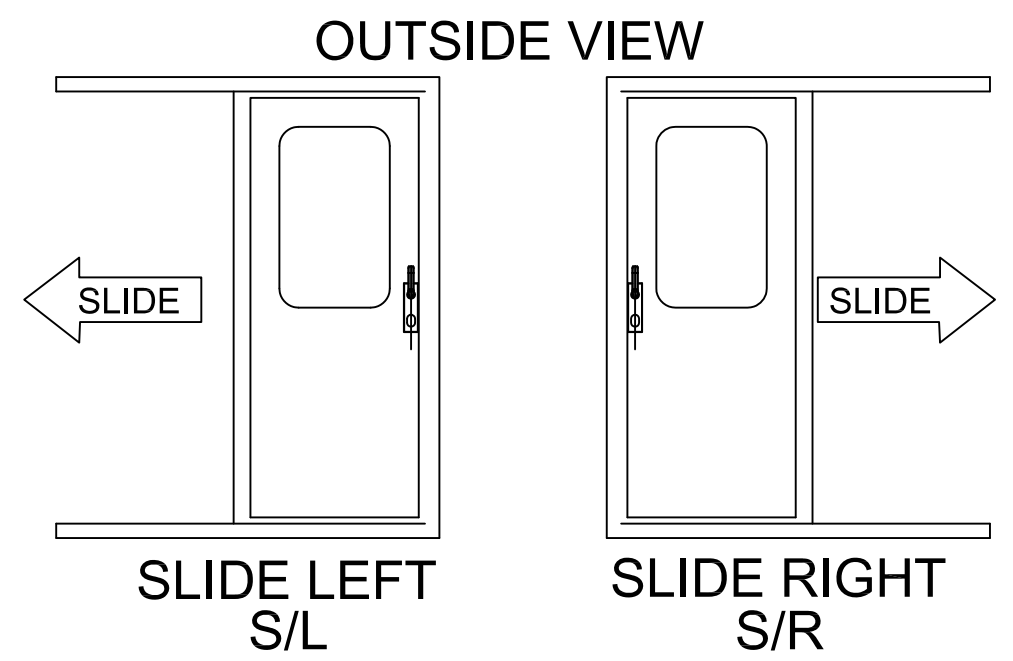
DRILL MOUNTING HOLES: Y _____ N _____

FRAME FINISH: _____

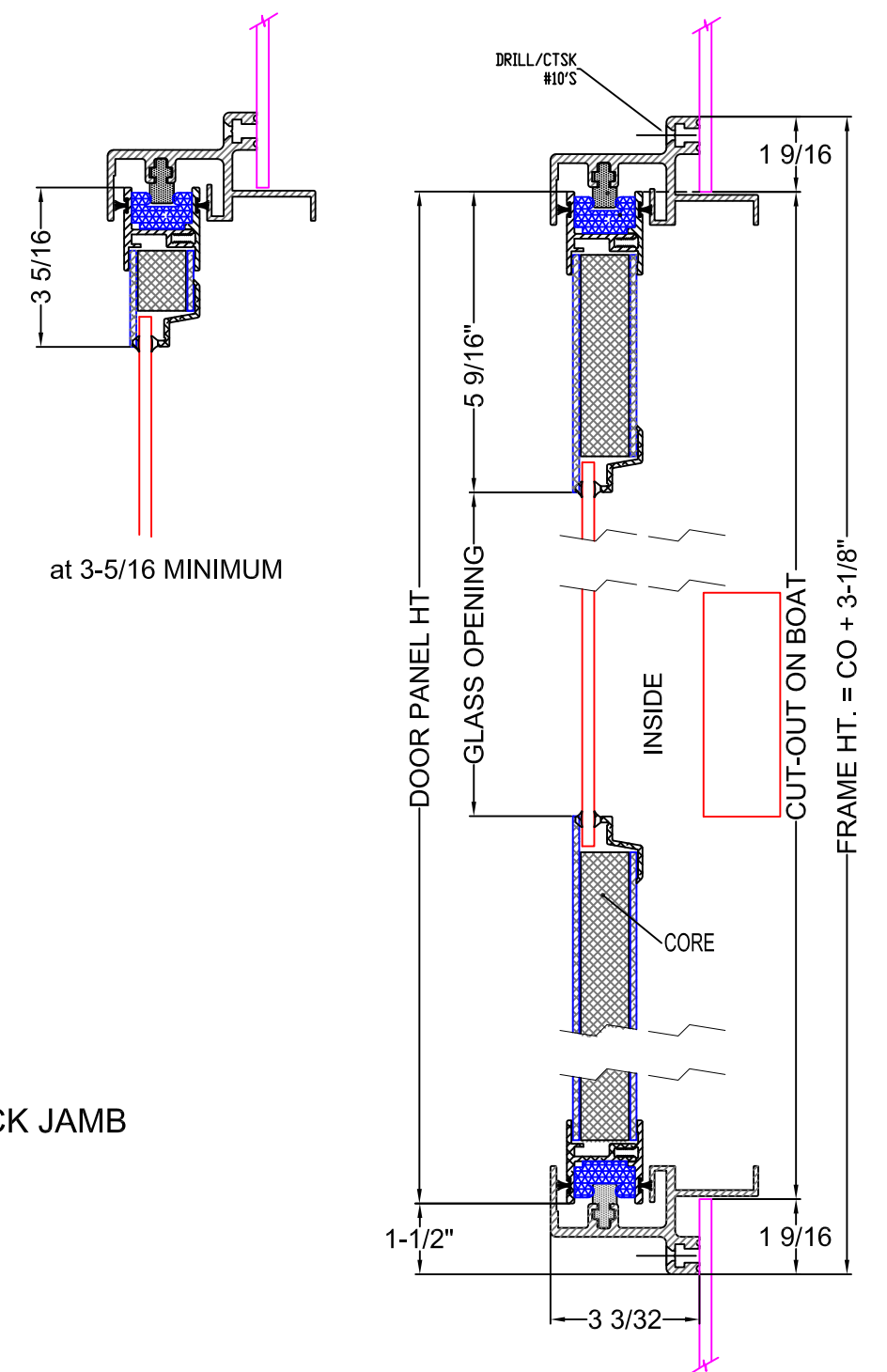
POWDER COAT COLOR: _____

GLASS THICKNESS/TINT: _____

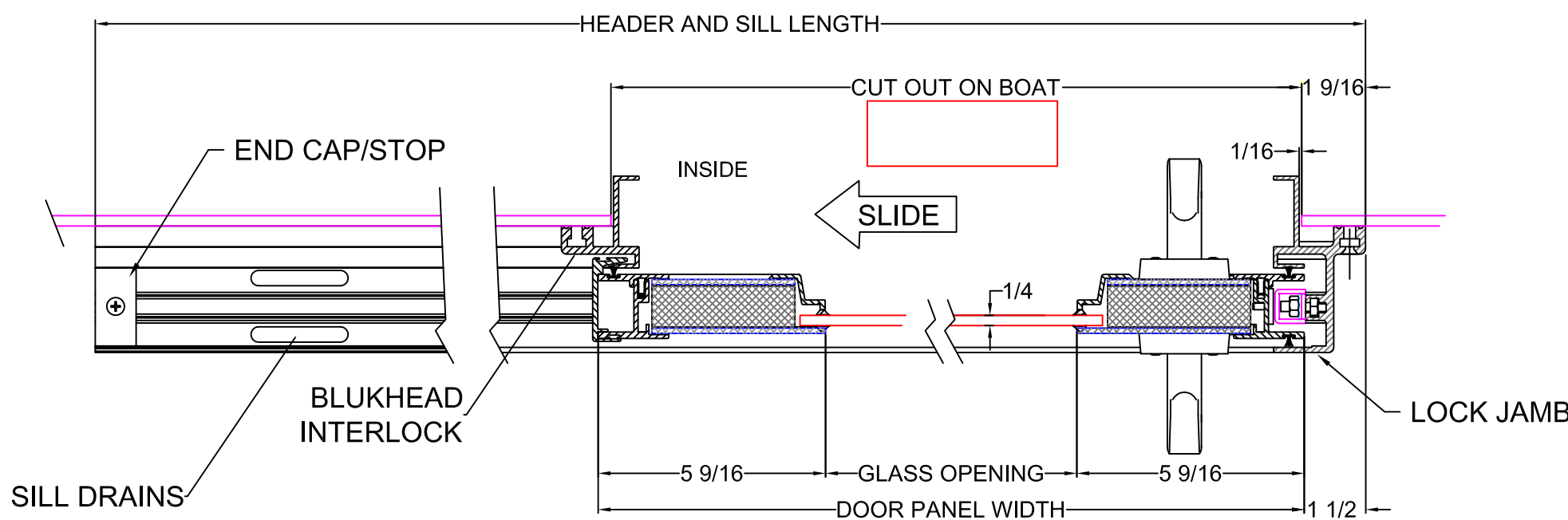
- DOOR SKINS 1/8" ALUMINUM LAMINATED TO 1" RIGID FOAM CORE
- WINDOW GLASS THICKNESS 6mm TO 12mm
- HD SS HOLD OPEN SLIDE BOLT
- TRIOVING KEYED LOCK



GLASS POSITION

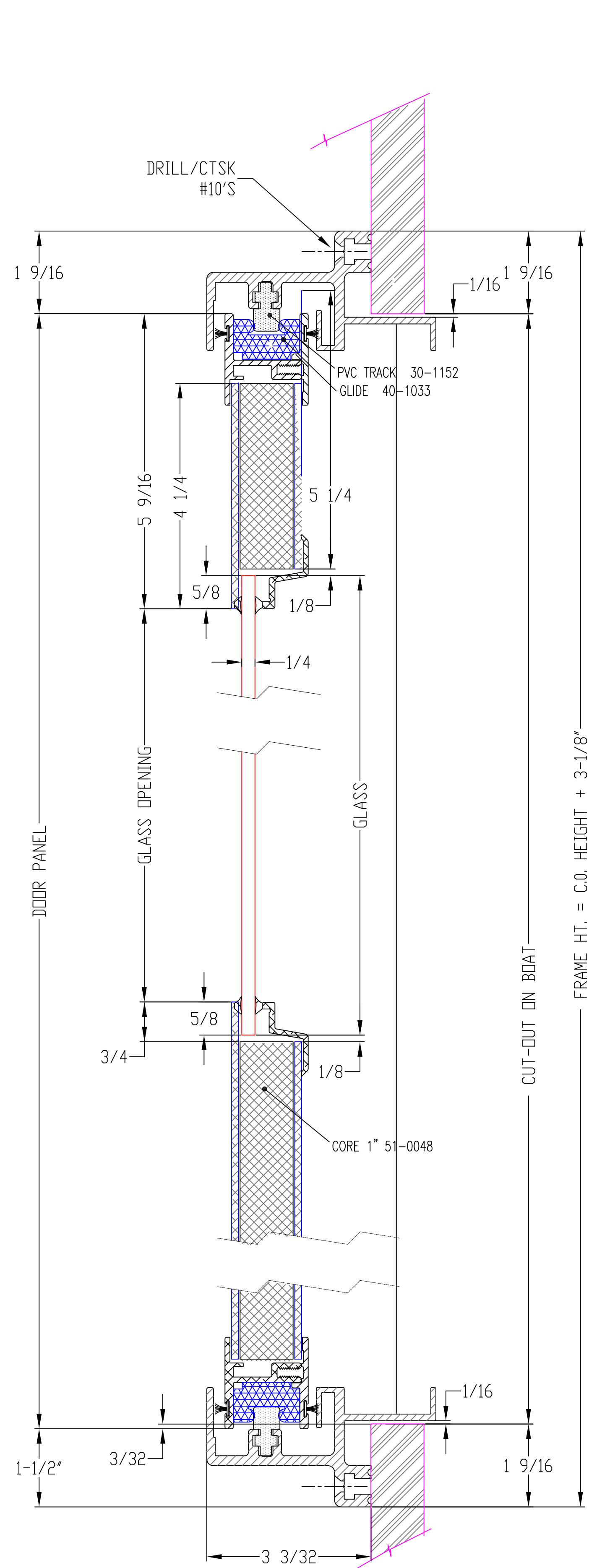


SECTION

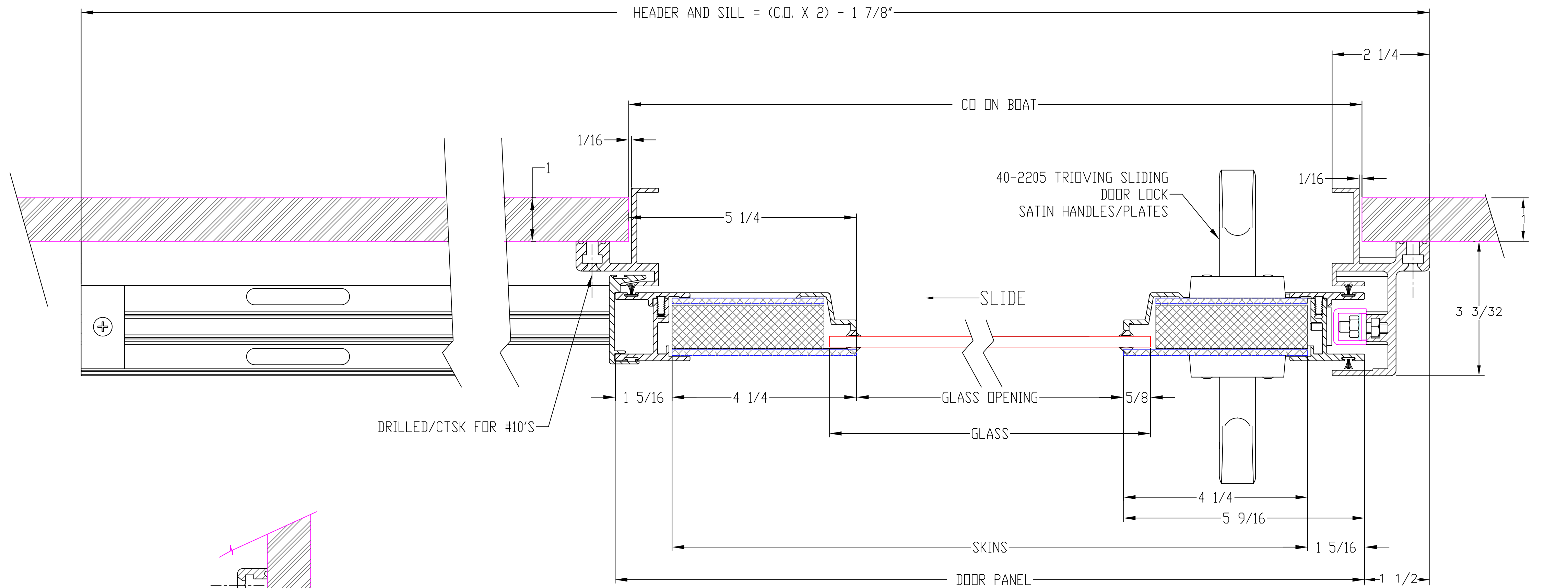


DOOR-PLAN VIEW

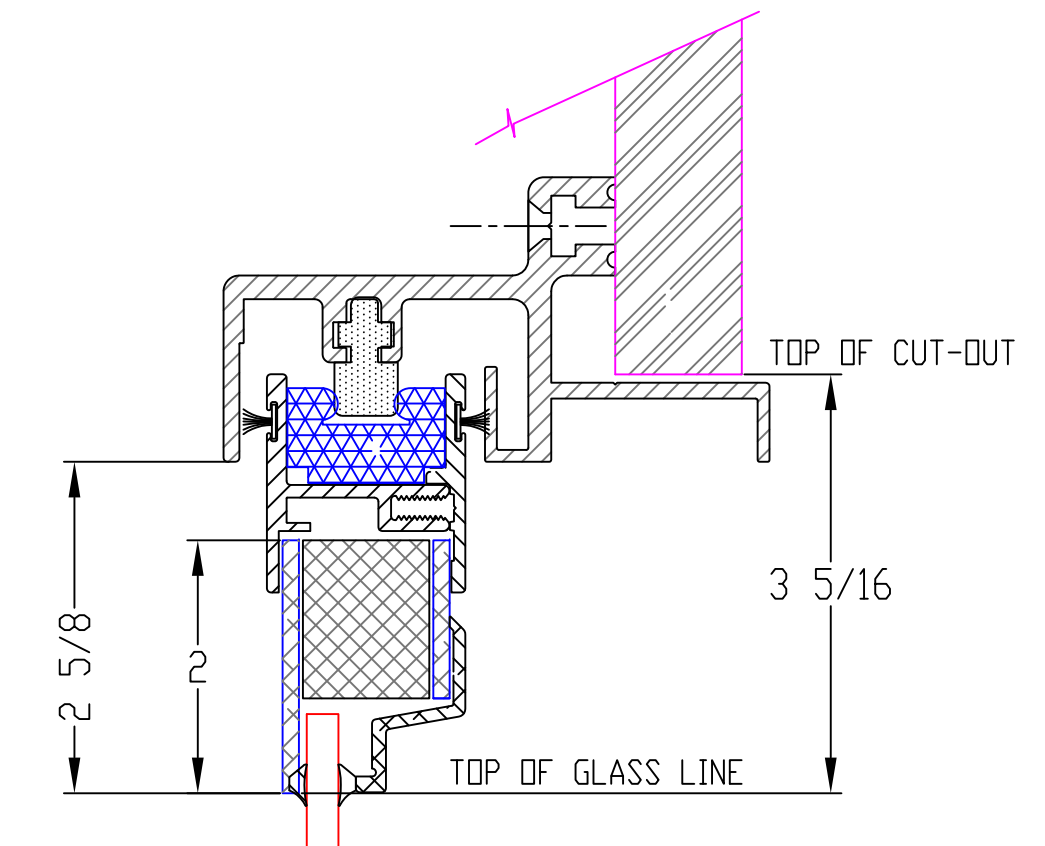
CUSTOMER _____



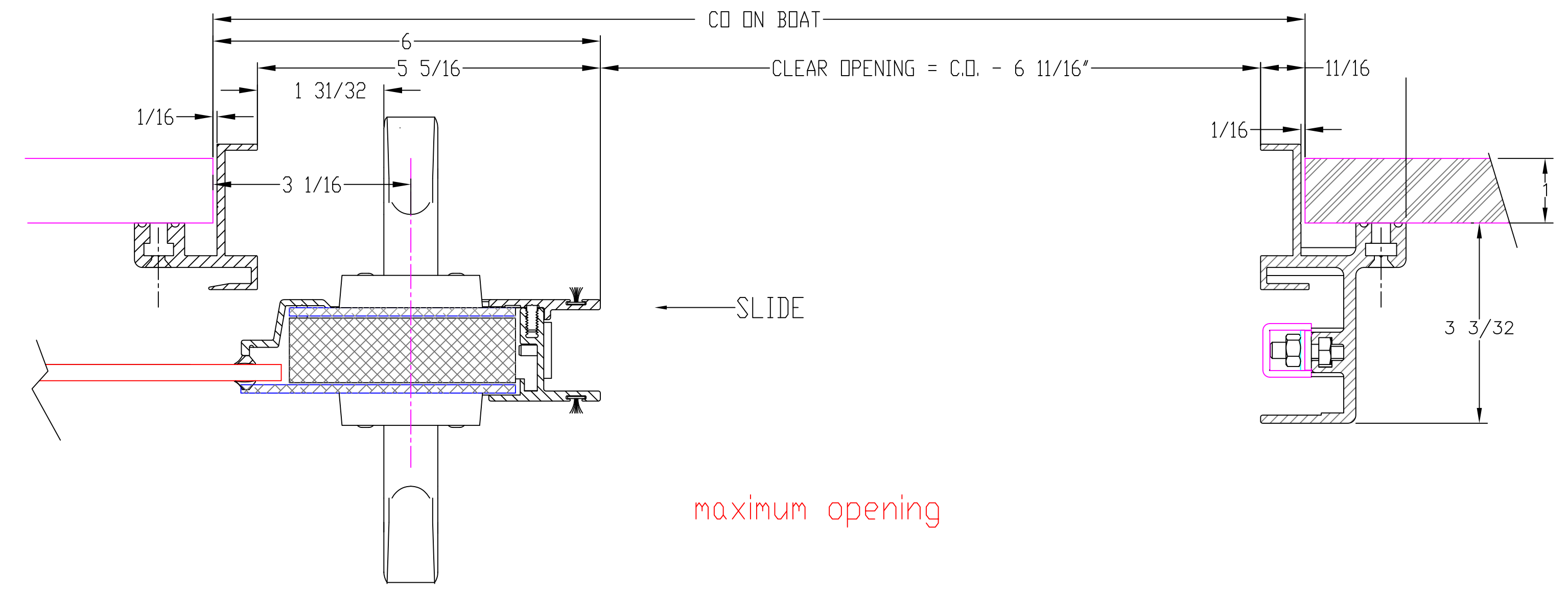
SECTION VIEW



PLAN VIEW



MAX. HT OF GLASS
STANDARD IS 5-9/16\"/>



maximum opening

CLEAR OPENING HT. = C.O. HT - 1-3/8\"/>

CLEAR OPENING WIDTH. = C.O. WIDTH - 6-11/16\"/>

DRAWING DATE

APPROVED BY:

DRAWN BY: DJMakibbin

CHECKED BY:

ALUMINUM 2000 POMPANETTE LLC			
CLIENT:		REV:	
PART NO:		DESCRIPTION: 1600-CB SLIDING DOOR SECTIONS	
MATERIAL:		WEIGHT:	
SIZE: B	SCALE: 8:1	SHEET 1	PROJECT:



Commercial

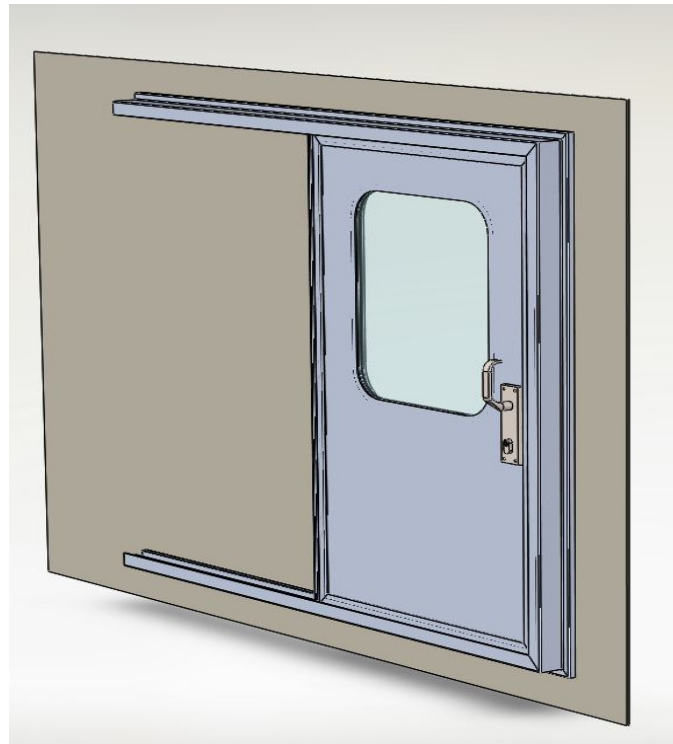
Doors - Windows - Hatches

1600 Series Sliding Door Systems

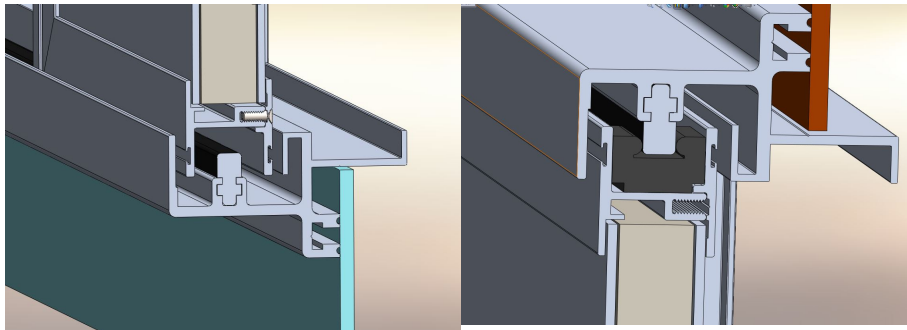
- Fully tested in the Tough Conditions of the North Atlantic
- Available in Your Choice of Two Configurations
 - ◆ Proven Low Maintenance Delrin Glide System
 - ◆ Ultra Smooth Roller Carriage System
- Available in any Custom Size to meet your requirements

Standard Features

- 5000 Series Aluminum Skins
- Acoustic Foam
- Direct Glazed Window
- Trioving Lockset



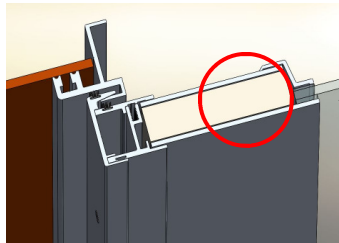
Featuring DuPont Delrin® acetal resin tracks and glides for trouble-free service



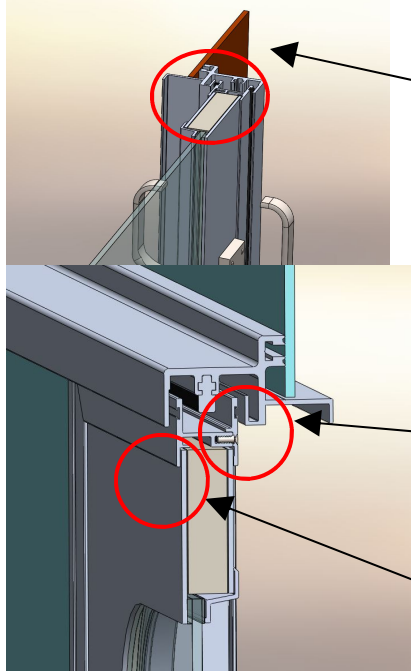


Commercial

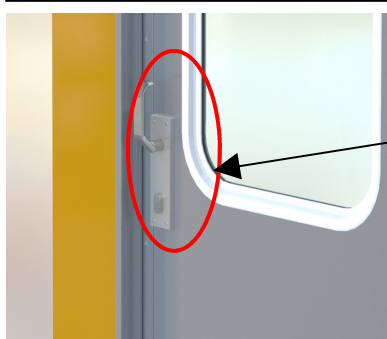
Doors - Windows - Hatches



Acoustic foam is the standard insulator although a wide variety of options exist to meet specific design needs.



The use of heavy gauge 5000 series, 1/8" skin allows for direct, frameless glazing of the window.



The master extrusion features an integral stand-off to allow for clearance when the door slides over adjoining windows.

A robust master frame design allows for the use of a "key-lock" design to capture the glide track for improved durability and easy replacement in the field.

Trioving locksets are standard and are available in a variety of styles and finishes to fit specific design needs.

