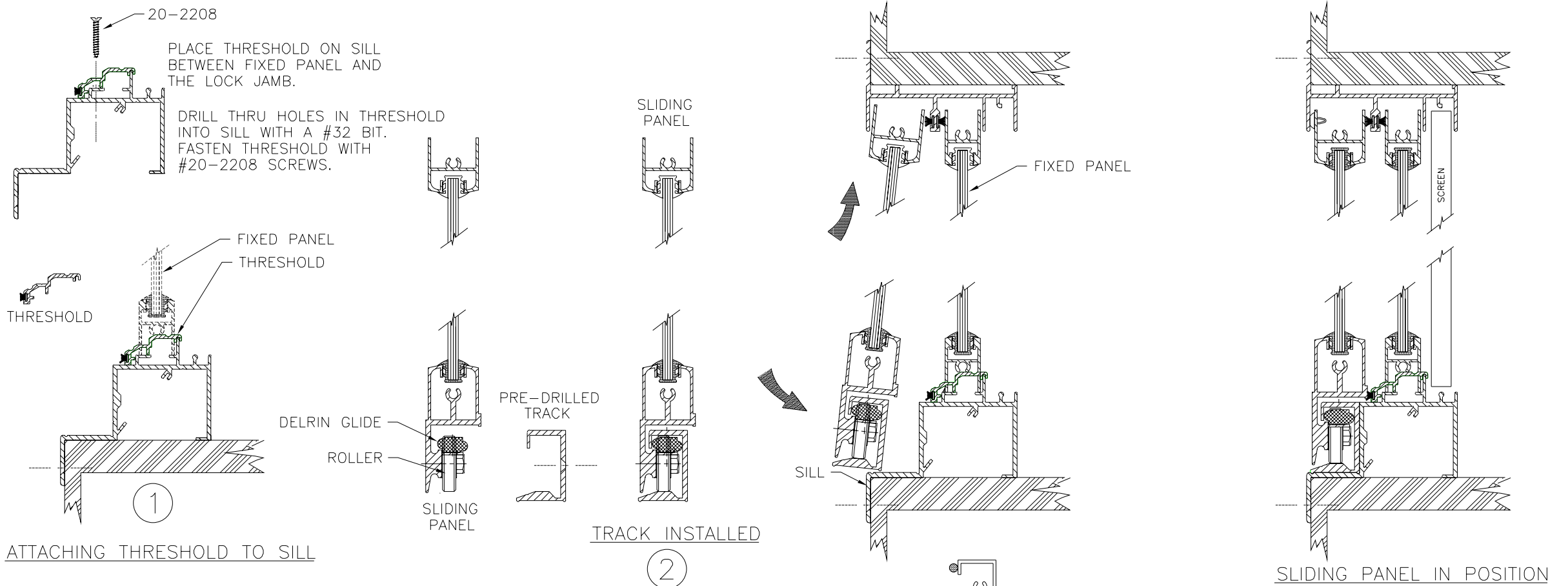


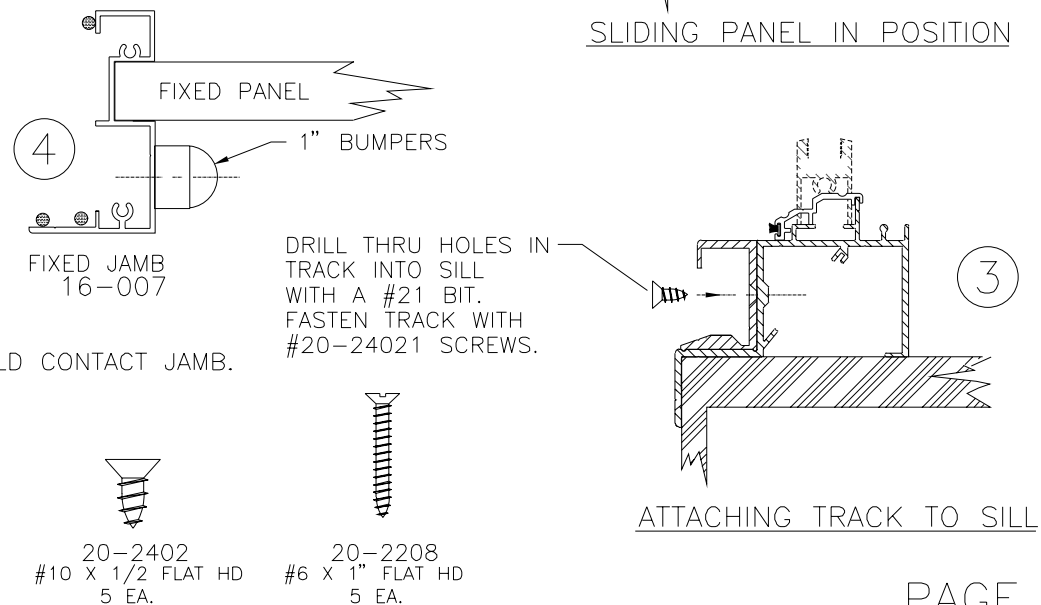
SERIES 1600-A MARINE SLIDING DOOR ASSEMBLY PROCEDURE



INSTALLING SLIDING PANEL

1. INSTALL THRESHOLD TO SILL WITH SCREWS PROVIDED
2. SLIDE TRACK ONTO ROLLERS ON BOTTOM OF SLIDING PANEL. TILT TOP OF DOOR UP AND INTO HEADER POCKET. SWING BOTTOM OF DOOR WITH TRACK ATTACHED ONTO SILL.
3. ATTACH TRACK TO SILL WITH SCREWS PROVIDED. SLIDE DOOR FROM SIDE TO SIDE TO EXPOSE MOUNTING HOLES IN TRACK. (YOU MAY NOT BE ABLE TO ACCESS THE CENTER HOLE)
4. INSTALL 1" RUBBER BUMPERS AT THE TOP AND BOTTOM OF FIXED JAMB WHERE SLIDING PANEL WOULD CONTACT JAMB.

CHECK THAT DOOR ROLLS FREE AND EASY, AND THAT LOCK AND KEEPER MATE PROPERLY. ADJUST FRAME IF NEEDED. SEE ALIGNMENT PROCEDURE SHEET.



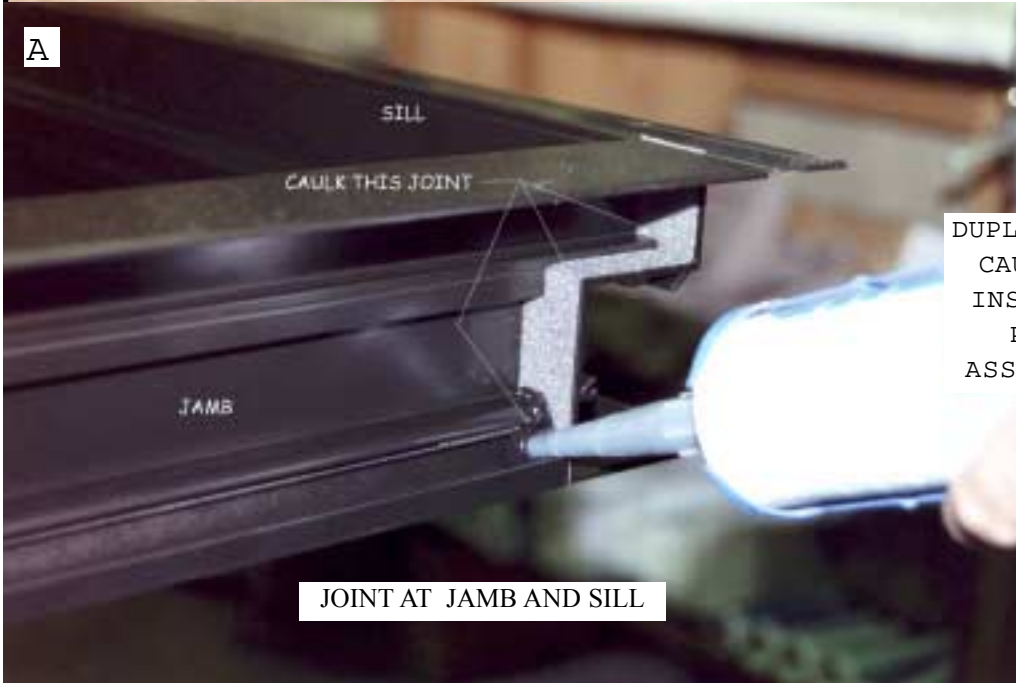
20-2402
#10 X 1/2 FLAT HD
5 EA.

20-2208
#6 X 1" FLAT HD
5 EA.

ASSEMBLY INSTRUCTIONS

PAGE 1 - PHOTO DETAILS

1600-A



DUPLICATE PROCEDURE AT HEADER
CAULK THIS ENTIRE JOINT TO
INSURE A WATER-TIGHT JOINT
PLEASE SEE PAGE 1 OF THE
ASSEMBLY PROCEDURE DRAWING



* FIXED PANEL IS MOUNTED IN FRAME
AFTER FRAME IS ASSEMBLED AND
INSTALLED IN BOAT OPENING.

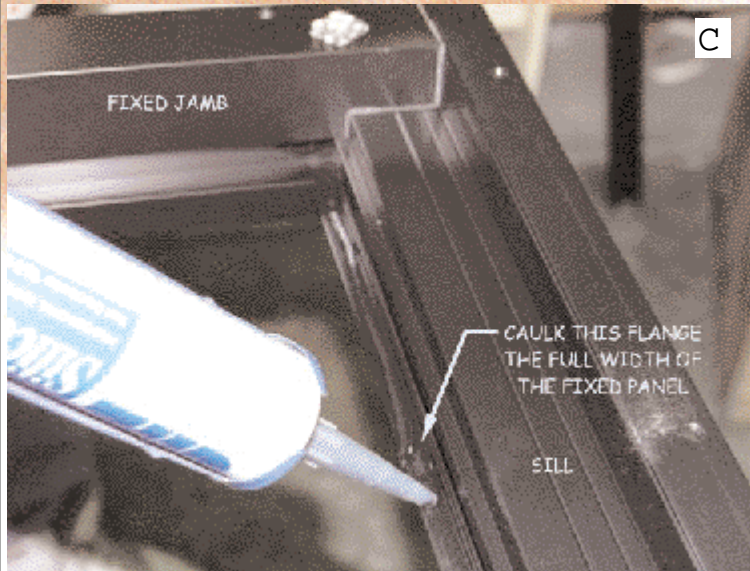
ALUMINUM A2000 INC.

595 East Oregon Road • Lititz • PA 17543
717-569-2300 • Fax 717-569-3870
www.aluminum2000.com

ASSEMBLY INSTRUCTIONS

PAGE 2 - PHOTO DETAILS

1600-A



AFTER POCKET AND SILL BOTTOM ARE CAULKED, INSTALL FIXED PANEL BY INSERTING TOP OF PANEL INTO HEADER AND SLIDING PANEL FULLY INTO JAMB POCKET OF FIXED JAMB. USE A RUBBER Mallet TO SEAT FULLY INTO POCKET.



DRILL AND CTSK FOR #6 SCREWS THRU INSIDE SILL FLANGE INTO THE BOTTOM RAIL OF THE FIXED PANEL TO LOCK PANEL IN PLACE. MAKE SURE FIXED PANEL IS FULLY ENGAGED INTO FIXED JAMB POCKET BEFORE DRILLING HOLES. USE #20-2202 #6 X 3/8" FH SCREWS PROVIDED



ANCHOR CLIP COMES INSTALLED ON FIXED PANEL. ADJUST CLIP SO THAT TOP OF CLIP LAYS FLUSH ON HEADER. VERIFY THAT FIXED PANEL IS SEATED INTO JAMB AND FRAME AND PANEL ARE SQUARE AND PLUMB BEFORE DRILLING THRU ANCHOR CLIP INTO HEADER. USE #20-2404 #10 X 1/2" PAN HEAD SCREW.

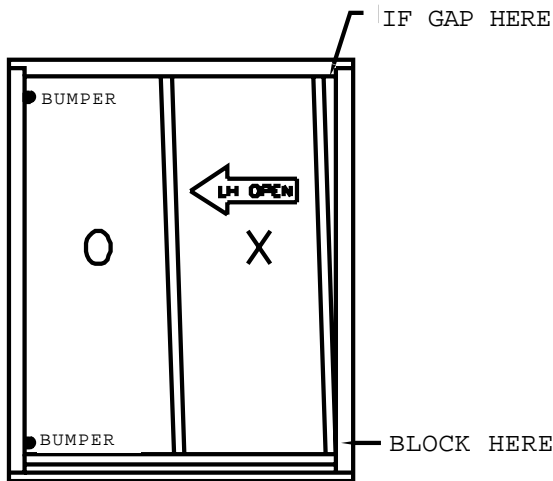
ALUMINUM 2000 INC.

595 East Oregon Road • Lititz • PA 17543
717-569-2300 • Fax 717-569-3870
www.aluminum2000.com

1600-A 2-PANEL SLIDING MARINE DOOR

ALIGNMENT INSTRUCTIONS

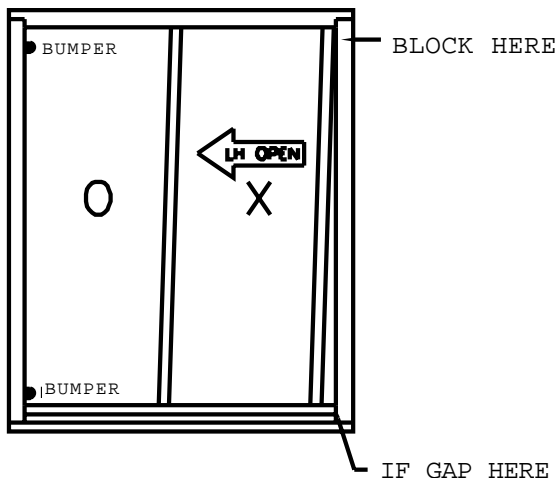
After you have completed the assembly and installation of the door unit, and find that the rolling panel in its' closed position does not align properly with the lock jamb so that the hook and keeper do not properly mate, proceed as follows.



MOVE DOOR TO CLOSED POSITION AND OBSERVE WHETHER THE TOP OR BOTTOM OF PANEL CONTACTS LOCK JAMB FIRST.

GAP AT TOP

Open door and place a block on the sill, against the lock jamb. Block should be wood, plastic or rubber, so as to not mar the finish on the door or jamb. Now, holding sliding panel firmly, roll it vigorously into lock jamb and block. This will tend to re-align frame of door panel around glass and bring lock stile of door into alignment with lock jamb. (bump as many times as needed to obtain alignment.) Remove block and sight along sliding door edge and jamb edge to see if you have a uniform gap running the length of the panel. If so, close door fully to engage lockset into keeper. When properly aligned, lock should function correctly.



GAP AT BOTTOM

Follow same procedure as above, but place block at top of jamb as shown.

SCREEN

Screen installation requires installation of screen keeper onto lock jamb. Screws and keeper is provided. When screen is in place, adjust top and bottom rollers until screen rolls smoothly and the screen can't be lifted up in the track. A good snug fit will allow the screen to operate the best.